



# Shoreline Stories

by Lisabelle Art Studio



Quilt size: 70" x 90" (1.78m x 2.286m)

Skill Level: Advanced Beginner

## Shoreline Pride Quilt

Designed and sold by Tiffany Hayes, Needle in a Hayes Stack  
[www.needleinahayesstack.biz](http://www.needleinahayesstack.biz)



## Shoreline Pride Quilt Ordering Guide

SKU	Yards	Meters	12 Kits	24 Kits
3222-11	1/2 yds	0.46m	1 bolt	1 bolt
3223-77	1 1/4 yds	1.14m	2 bolts	3 bolts
3225-11	1/4 yds	0.23m	1 bolt	1 bolt
3226-01	1/2 yds	0.46m	1 bolt	1 bolt
3227-11	1/2 yds	0.46m	1 bolt	1 bolt
3228-11	1/2 yds	0.46m	1 bolt	1 bolt
3230-77	1 1/2 yds	1.37m	2 bolts	3 bolts
3231P-77	2/3 yds	0.60m	1 bolt	2 bolts
9570-09	1 yd	0.91m	1 bolt	2 bolts
9570-75	1 1/2 yds	1.37m	2 bolts	3 bolts

### Backing Fabric Option

3229-11	5 yds	4.57m	5 bolts	9 bolts
---------	-------	-------	---------	---------

\* Indicates binding fabric.

FQ = 18" x 22" (0.45m x 0.55m)

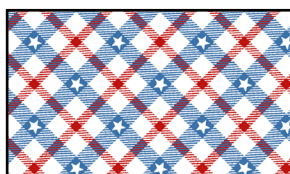
All fabric quantities are based on 15yd bolts unless otherwise indicated.



3222-11  
Tossed Flags



3223-77  
Texture



3225-11  
Bias Plaid



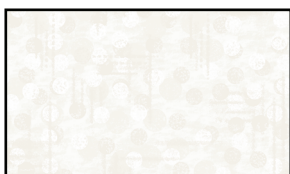
3226-01  
Tossed Bird Houses



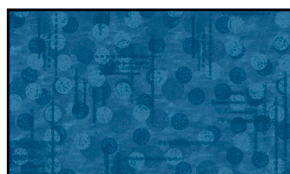
3227-11  
Hot Air Balloons



3228-11  
Patchwork



9570-09  
Jot Dot  
White



9570-75  
Jot Dot  
Blue



3231P-77  
Patriotic Panel 24 Inch



3230-77  
Border Stripe